



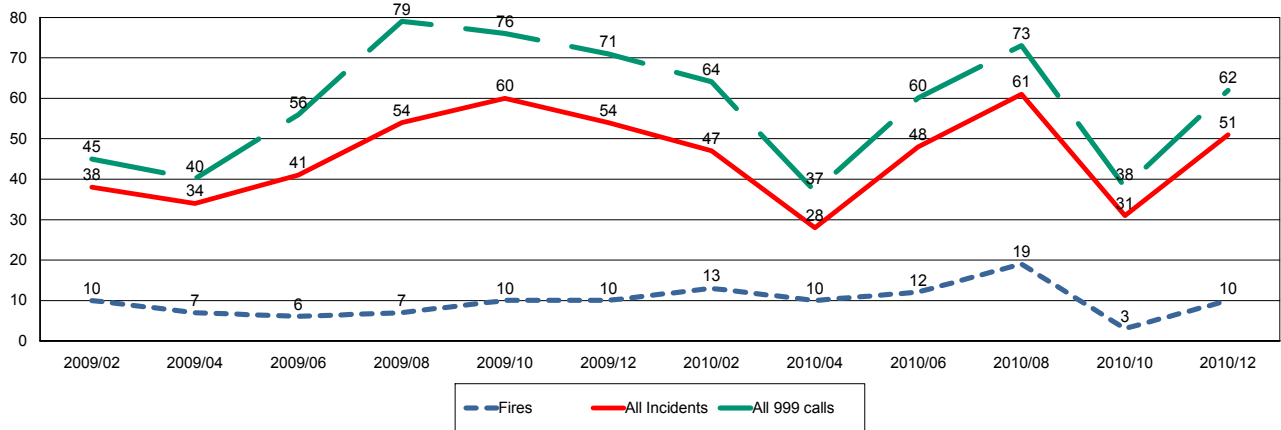
# Wiltshire Fire & Rescue Service

Wiltshire and Swindon Fire Authority

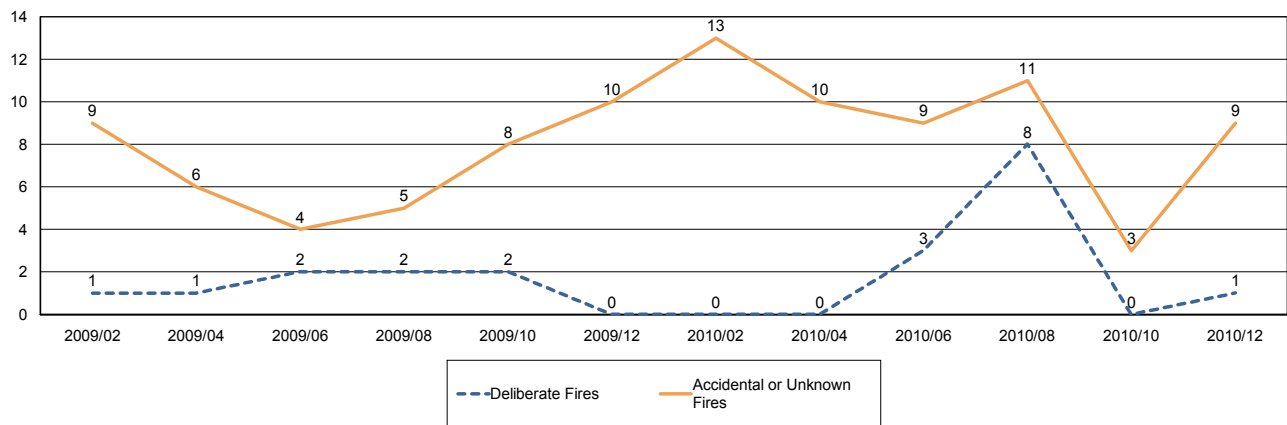
## Report for Malmesbury Area Board

The following is a bi-monthly update of Fire and Rescue Service activity up to and including December 2010. It has been prepared by the Group Manager for the Board's area.

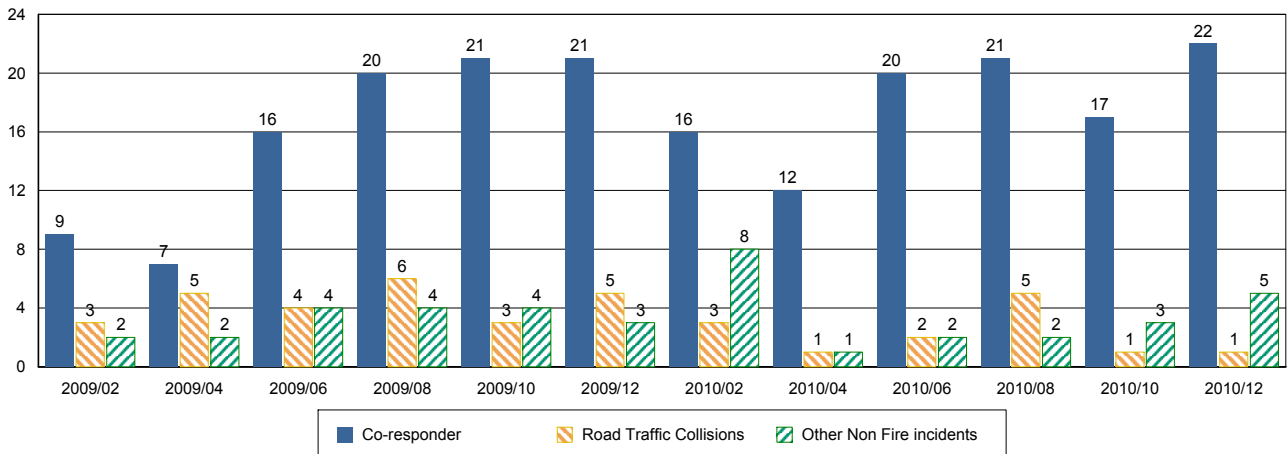
### Incidents and Calls



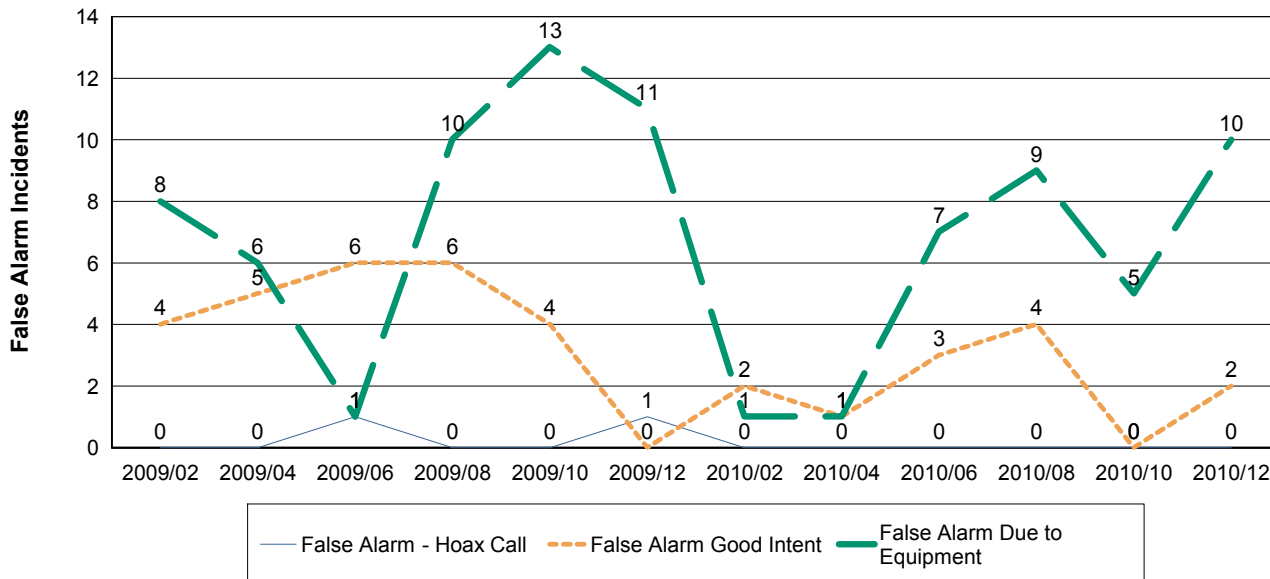
### Fires by Cause



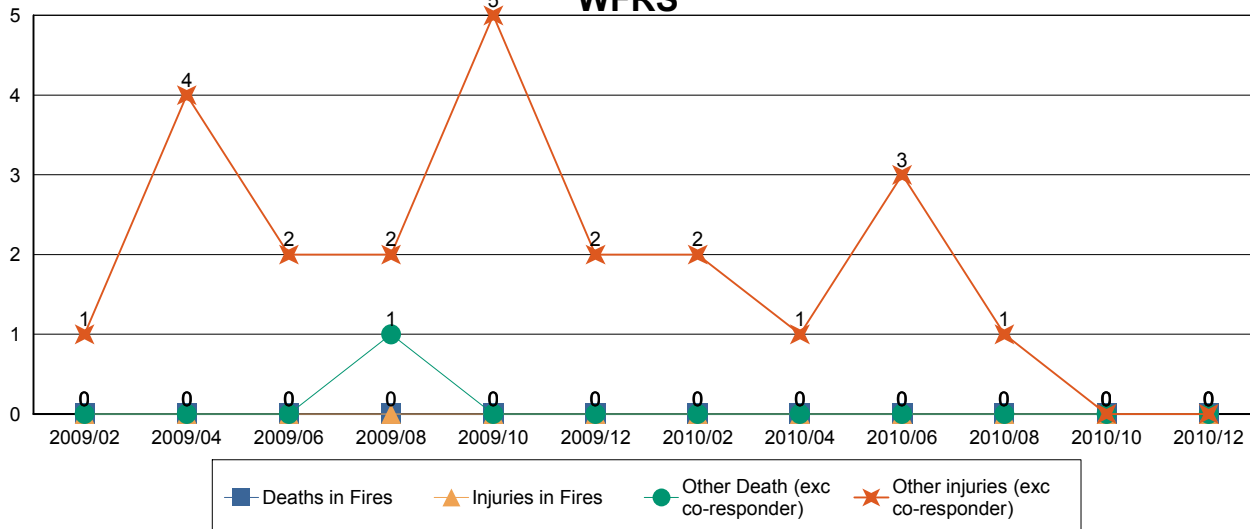
### Non-Fire incidents attended by WFRS



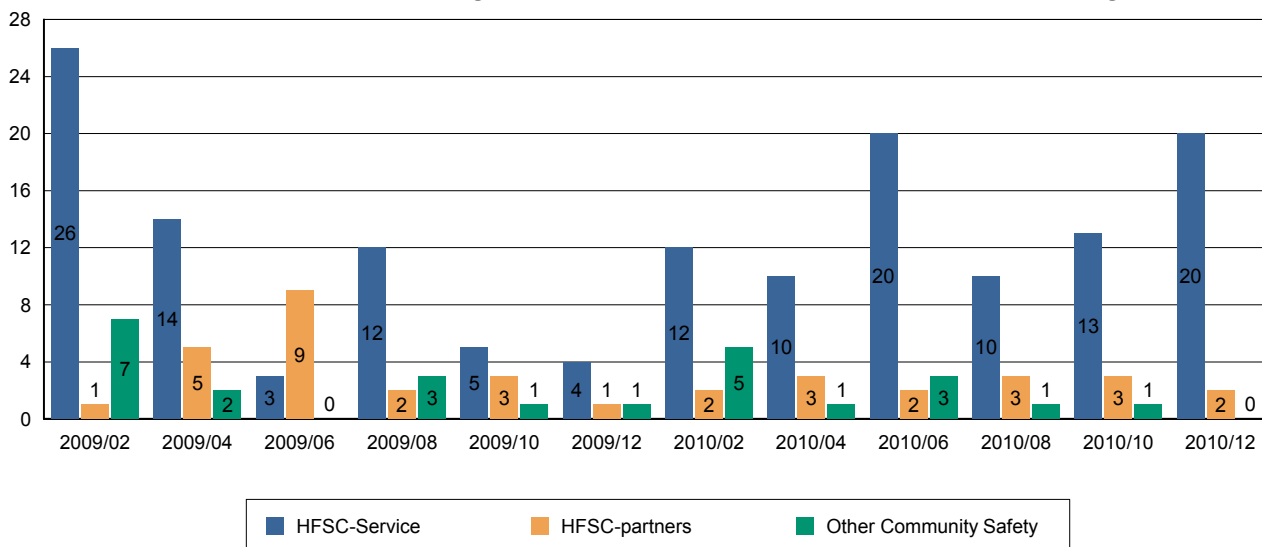
### Number of False Alarm Incidents



### Death & Injuries in incidents attended by WFRS



### Home Fire Safety Checks and other domestic safety



Comments and Interventions overleaf